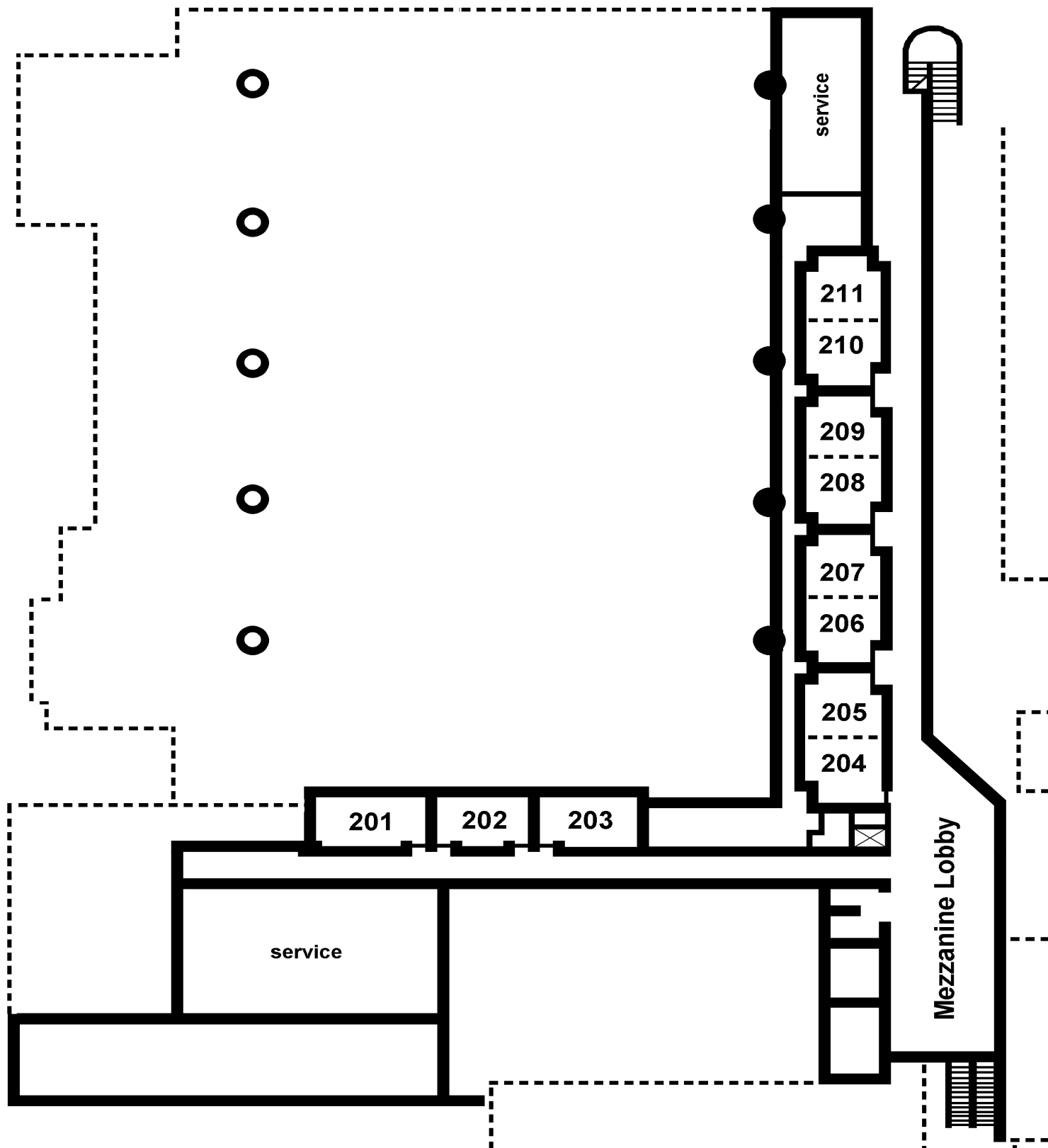


PRIME F. OSBORN III CONVENTION CENTER

(Mezzanine Level)



PRIME F. OSBORN III CONVENTION CENTER & ITS OFFERINGS

GENERAL BUILDING INFORMATION:

- 296,000 Gross s.f. of space
- 48,000 s.f. carpeted meeting space in 22 rooms
- 78,500 s.f. contiguous exhibit space, 100,000 total
- 450 10'x10' booths in contiguous space, 550 total
- 19,000 s.f. pre-function area plus 11,000 s.f. terrace
- 31,500 s.f. fenced grass pavilion
- 10,000 s.f. Grand Lobby with 75' vaulted ceiling
- 860 Parking spaces
- Two (2) Executive Boardrooms and VIP Suite
- Six (6) bay loading docks and two (2) on-grade hall entrances
- Wireless Capabilities

LOADING DOORS:

- Exhibit Hall Door 1: Grade-entry rollup (Hall A), 15'H x 24'9"W
- Doors 2, 3, 4, 5: Loading Dock, rollups, 14'H x 20'W
- Door 6: Grade-entry rollup (Hall B), 15'H x 24'9"W
- Door 11, Ballroom: 7'10"H x 7'7"W
- Prefunction South Wing Doors: 10'9"H x 9'2"W
- Grand Lobby, Interior Rollup Door: 11'4"H x 9'6"W
- Room 101, Interior Rollup Door: 11'4"H x 6'3"W
- Room 102, Interior Wing Doors: 7'11"H x 7'11"W
- Room 104, Interior Pocket Door: 8'4" H x 8'4" W

FLOOR LOADING:

- Exhibit Hall: 360 lbs/psf
- Meeting Rooms: 360 lbs/psf
- Old Terminal: 250 lbs/psf

LIGHTING:

- Exhibit Hall, Primary:** Metal halide, zoned
- Secondary:** Quartz halogen, dimmable
- Ballroom, Primary:** Metal halide, zoned.
- Secondary:** Incandescent Chandeliers, Lutron Control
- Room 101, Primary:** Metal halide, zoned.
- Secondary:** Incandescent Chandeliers, Sconces, dimmable
- Rooms 102-103, Primary:** Metal halide, zoned.
- Secondary:** Incandescent downlights
- Grand Lobby, Primary:** Incandescent ceiling floods, dimmable
- Secondary:** Incandescent wall sconces, dimmable
- Meeting Rooms, Primary:** Fluorescent, zoned
- Secondary:** Incandescent downlights, dimmable



UTILITIES:

- Compressed Air:** at selected locations in Exhibit Hall by prior request. Average 60 psi
- Electrical:** 120VAC, 208VAC in 30'x30' floor grid, perimeter boxes Up to 480VAC, 400A by request.
- Plumbing:** Domestic water and drain service at selected Exhibit Hall locations
- Telecommunications:** The Exhibit Hall and meeting rooms are wired for Cat 3 and Cat 5 HSD
- Rigging:** The Center's Exhibit Hall Rigging Grid is available on request. Rigging plots may be required.
- Columns:** The Exhibit Hall span between column centers is 180' north-south; and 60' east-west. The maximum column-free area is 330' x 180' (59,400 sq. ft.)

TRANSPORTATION, PARKING AND OTHER INFORMATION:

Located on 22 acres, the Prime F. Osborn III Convention Center has on-site parking for nearly 1,000 cars, with 4,000 additional spaces within easy walking distance. Public transportation is provided through our bus and trolley system. The Sky Way can also whisk visitors from Jacksonville's main downtown business centers and from across the St. Johns River. For your convenience, ATMs, telephones with volume enhancement and on premise security are all available to make your event enjoyable and safe.